

Humble, Texas

FM 1960 & Deerbrook Park Blvd

3.50 +/- Acres For Lease



This area of Humble is just west of I-69 and north of IAH. Strong future home growth north and west of the site will continue to drive traffic past the site on FM 1960 as drivers come off I-69 towards home.

Demographics

2014 Estimates	3 Mile	5 Mile	7 Mile
Population:	37,019	89,093	231,725
Households:	12,668	29,779	77,195
Med HH Income:	\$56,824	\$59,246	\$65,447

- Strong Traffic on FM 1960

- Perfect for:

- Local Retail
- Self Storage
- Medical

- Join CVS and Aldi

- Signalized Intersection



For More Information

Ron Riemer

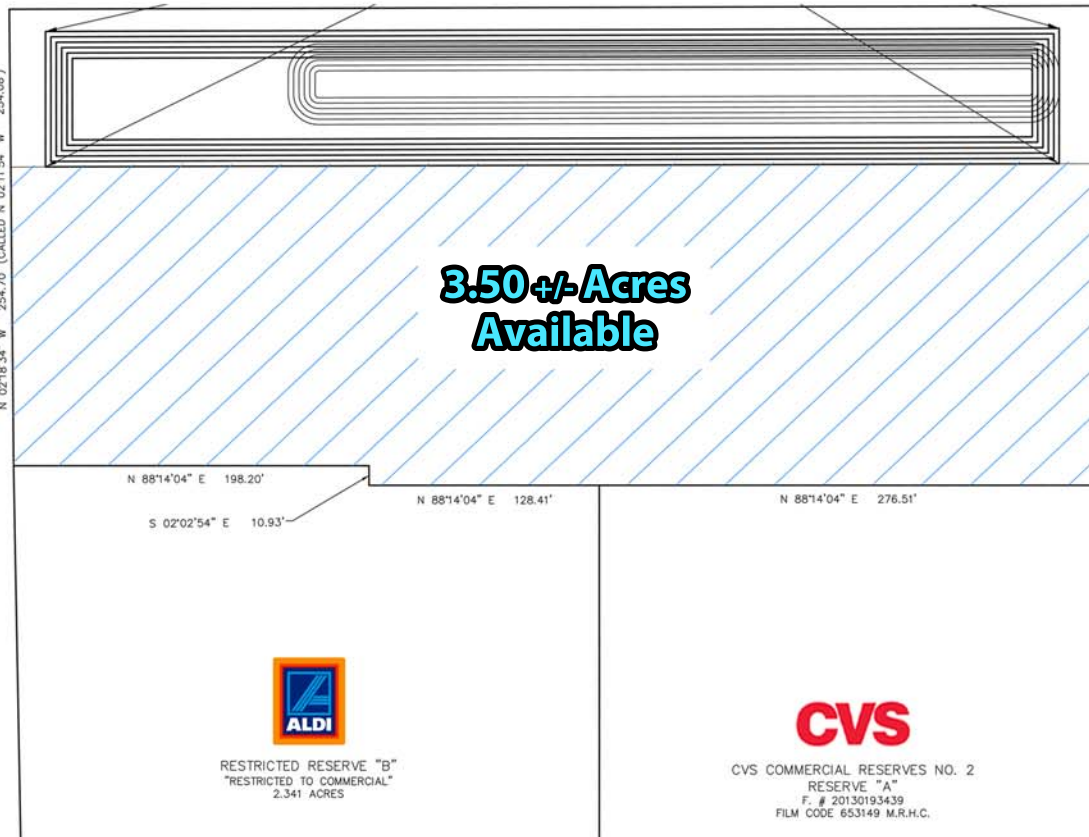
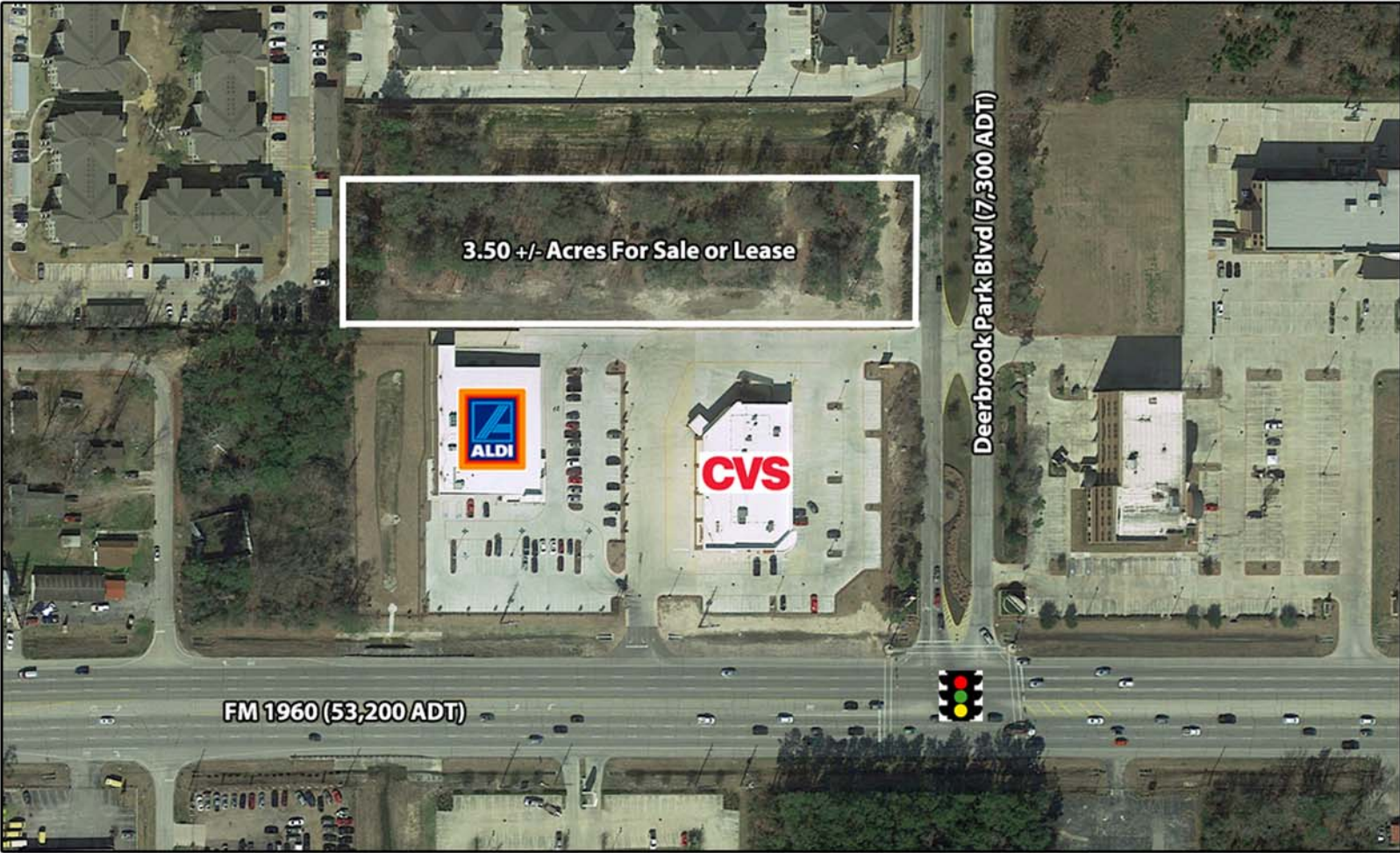
(630) 303-3549

rriemer@firsthartford.com



FIRST HARTFORD
REALTY CORPORATION

FM 1960 & Deerbrook Park Blvd - Humble, Texas



Disclaimer: The site plan shows the approximate location, square footage, and configuration of the shopping center and adjacent areas. The showing of any names of tenants, parking spaces, square footage, curb cuts, or traffic controls are a current representation as of 11/11/14. Any demographics set forth in this flyer are for illustrative purposes only and shall not be deemed a representation by Landlord of their accuracy.