

Conroe, Texas

Highway 242 & Harper's Trace

3.39 +/- Acres For Lease



Harper's Preserve is a new 880 acre master-planned community located near The Woodlands just east of I-45. Highway 242 is currently being enhanced with a new flyover exit from I-45 to ease congestion.

Demographics

2014 Estimates	3 Mile	5 Mile	7 Mile
Population:	24,443	81,940	184,127
Households:	9,744	31,640	69,024
Med HH Income:	\$75,931	\$92,425	\$86,886

- Strong Traffic on Highway 242
- Perfect for Pad Sites or Strip Retail
- Join CVS set to open in 2015
- New Traffic Signal on Highway 242



Entrance to Harper's Preserve

For More Information

Jonathan Bellock

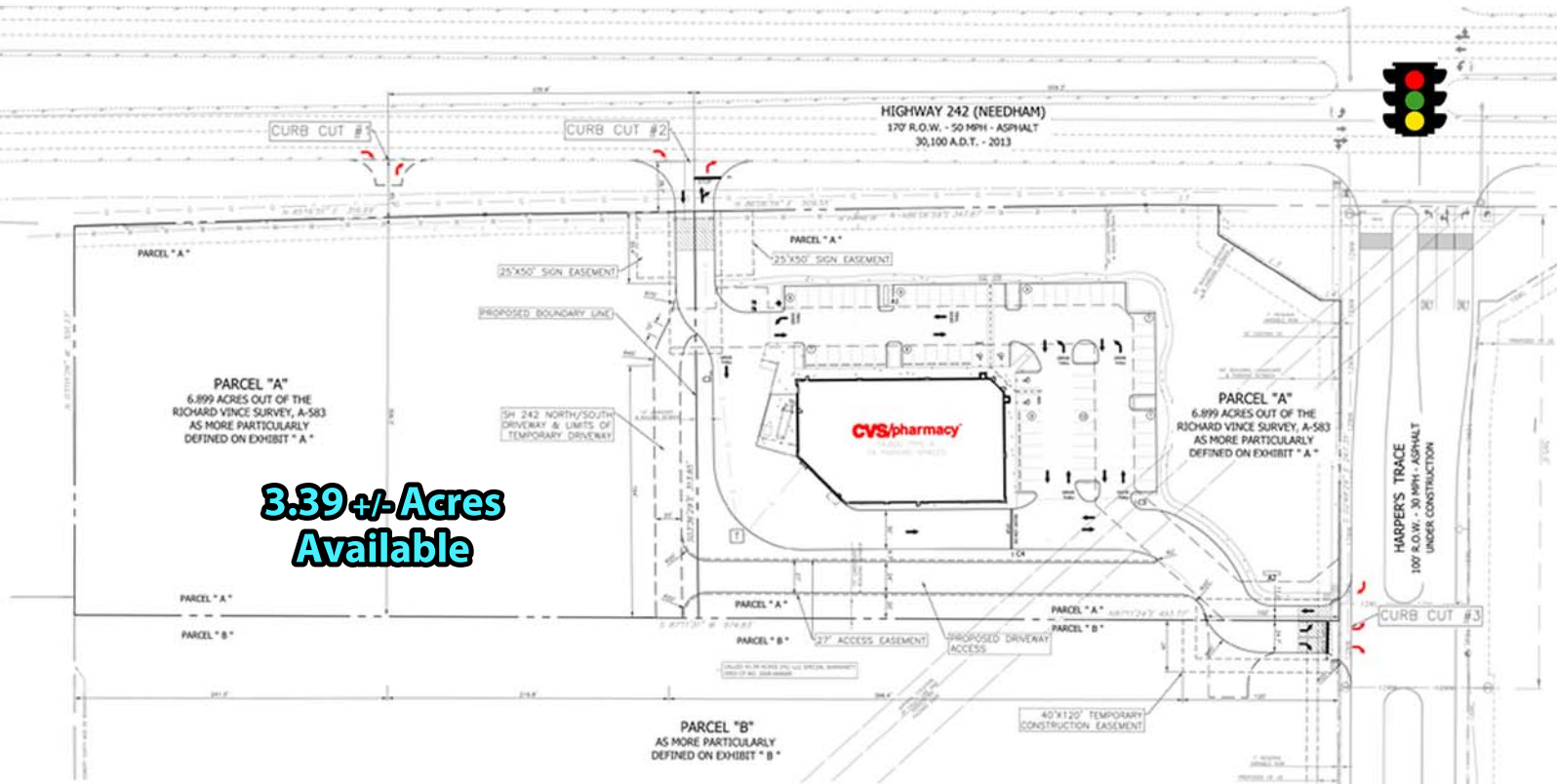
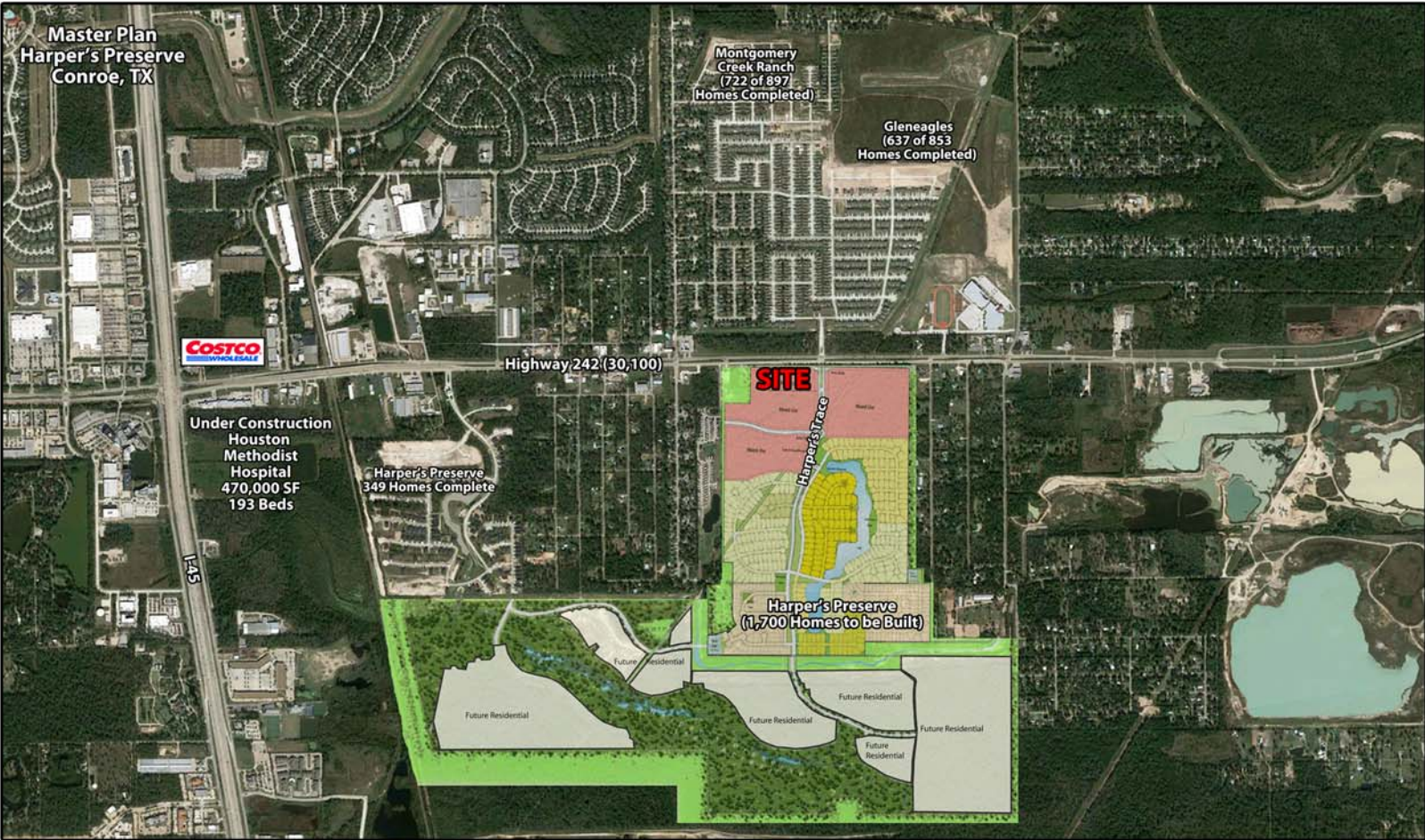
(860) 712-4490

jbellock@firsthartford.com



FIRST HARTFORD
REALTY CORPORATION

Highway 242 & Harper's Trace - Conroe, Texas



Disclaimer: The site plan shows the approximate location, square footage, and configuration of the shopping center and adjacent areas. The showing of any names of tenants, parking spaces, square footage, curb cuts, or traffic controls are a current representation as of 11/11/14. Any demographics set forth in this flyer are for illustrative purposes only and shall not be deemed a representation by Landlord of their accuracy.